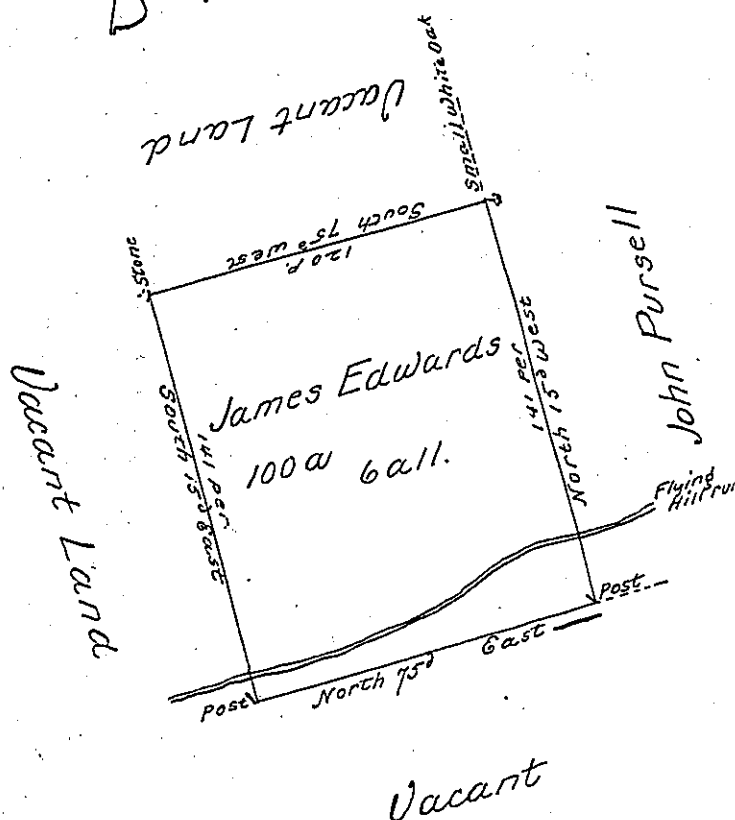


B-17-62



By Virtue of a Warrant from the Proprietor dated the First day of October Anno Domini 1737.

The above described tract of Land was Surveyed unto James Edwards in Cumru Township in the County of Lancaster Beginning at a post at a corner of the Land of John Pursell thence north 15 degrees west by ye same 141 perches to a small white oak &c. Containing one Hundred acres beside the usuall allowance.

12 day 2^d mo. 1738

p. Sam^l Lightfoot

IN TESTIMONY that the above is a copy of the original remaining on file in the Department of Internal Affairs of Pennsylvania, made conformably to an Act of Assembly approved the 16th day of February, 1833, I have hereunto set my Hand and caused the Seal of said Department to be affixed at Harrisburg, this seventh day of January 1902

James W. Pitta
Secretary of Internal Affairs.